



HomeMade

Home care made by you

Be independent.
Choose your support.



About us

HomeMade is transforming home care in Australia. Our approach means we support you to achieve your goals while living at home.



Self-management with HomeMade

Self-management is having an active role in your support so you can keep doing what matters most to you. Self-managing your Home Care Package gives you control of decisions about your support.

Why choose self-management with HomeMade?



Remain living at home



Take control of your budget



Decide what services you need



Choose who comes into your home to support you and when



Access what you need from your package when you need it



Optimise funds with lower fees



Feel safe, supported and reassured in the quality of your services



Improve overall wellbeing by doing the things you want to do

How it works

We work with you to design your support and services so your Home Care Package is effectively used with low admin fees. Keep your freedom and control but get support and help when you want it.

Step 1

You select HomeMade as your approved provider.

You share your relevant information so we can get you started

Together we design your support plan and budget

We work together to identify the support workers and services that will suit you best

Step 2

You choose your service providers and workers.

HomeMade helps you set up your team of workers and service provider

You take control of the day to day management of your support services

Step 3

We support you to manage your services and budget.

Together we manage your budget and track your spending

HomeMade manages safeguards and payments on your behalf

We work together to ensure your support plan continues to meet your needs. We work together to identify the support workers and services that will suit you best

Our values



Put people first

People and relationships matter most



Foster freedom

Live life your way



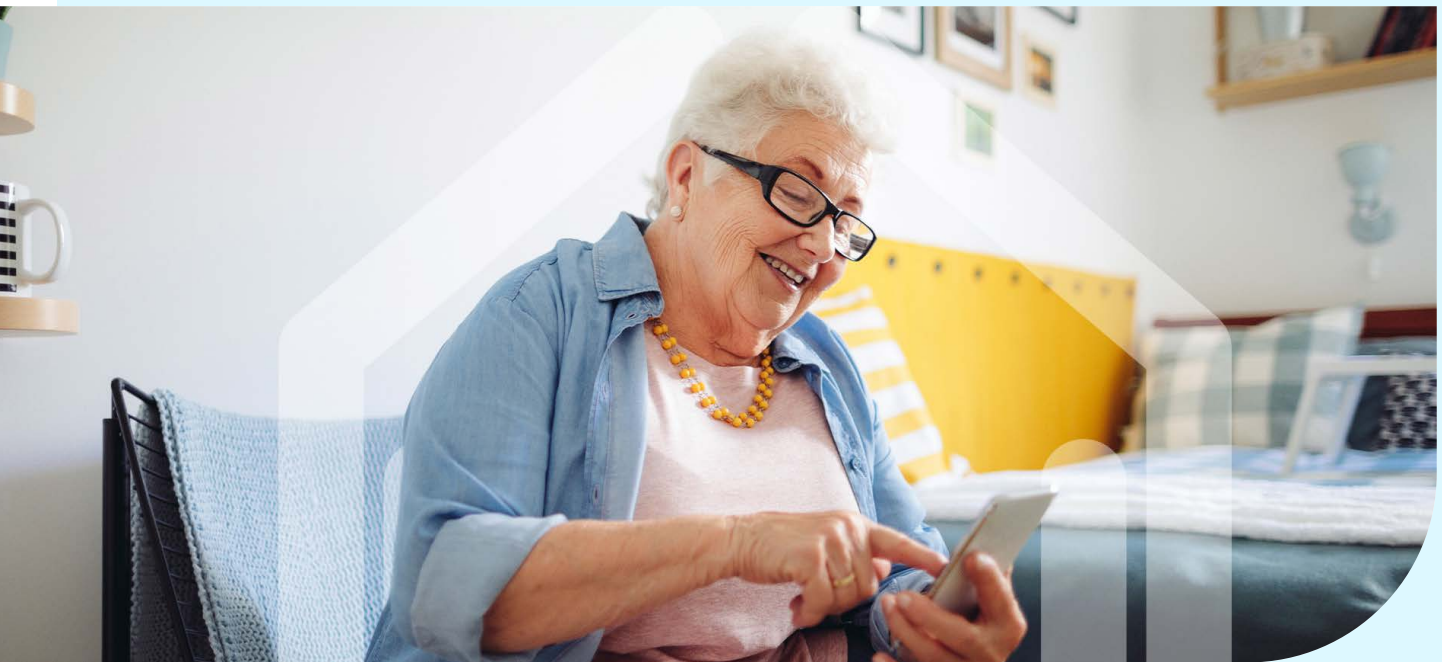
Do the right thing

Be fair, honest, open, ethical and transparent



Be bold

Imagine and create a brighter future



Services

Use your Home Care Package funding for the services you want or need. We'll make sure they meet government guidelines and are part of your support plan.

You can use your funding for services such as:



**Cleaning and
laundry**



**Home and
garden**



**Personal
care**



**Shopping and
errands**



**Technology and
equipment**



**Nutrition and
meal preparation**



**Companionship
and socialising**



**Nursing and
medication**

Important note: Home Care Packages don't cover day-to-day bills, food, rent or mortgage payments, holidays, entertainment, healthcare covered by Medicare or the Pharmaceutical Benefits Scheme, or already-funded or government-subsidised programmes.

Supported self-management



When you work with us, we create a support plan that's bespoke to you. We partner with a wide range of support providers so we can find the best fit for you.

We're also available for when you want help, including:

- ✓ Quarterly calls
- ✓ Ad hoc support calls
- ✓ Incident reporting
- ✓ Achieving your goals
- ✓ Compliance



Select from our verified providers

We check provider insurance and registrations so you don't have to.



Search Mable's extensive Australian network

Use Mable to find and engage the services and support of your choice.



Register your own service provider

We'll register a provider you choose with HomeMade to deliver services.



Find support workers in your community

Connect with local support workers. We can help set you both up.

Tools for self-management: The main tool you need for self-managing your Home Care Package is a computer with access to the internet. You'll also need a phone number that you can be easily contacted on and an email address.

Pricing

Compared to traditional providers we maximise the value of your Home Care Package and you only pay for the services you choose with a flat admin fee of 15%.

	Average traditional provider	HomeMade support
Level 1		
Support funds available	\$10,271 per year	\$10,271 per year
Annual provider management fees	\$6,676 (65%)	\$8,730 (85%)
Estimated weekly hours of support	\$3,595 (35%)	\$1,541 (15%)
	2 hrs	3 hrs
Level 2		
Support funds available	\$18,064 per year	\$18,064 per year
Annual provider management fees	\$11,742 (65%)	\$15,354 (85%)
Estimated weekly hours of support	\$6,322 (35%)	\$2,710 (15%)
	3 hrs	5.5 hrs
Level 3		
Support funds available	\$39,311 per year	\$39,311 per year
Annual provider management fees	\$25,552 (65%)	\$33,414 (85%)
Estimated weekly hours of support	\$13,759 (35%)	\$5,897 (15%)
	8 hrs	12 hrs
Level 4		
Support funds available	\$59,594 per year	\$59,594 per year
Annual provider management fees	\$38,736 (65%)	\$50,655 (85%)
Estimated weekly hours of support	\$20,858 (35%)	\$8,939 (15%)
	12 hrs	18.5 hrs
Typical service cost per hour	\$62	\$52

Meet Peter

Peter lives at home with his dog Alfie and recently celebrated his 78th birthday. Peter has always been a social and independent person, has two children and loves trivia.

Peter's challenges

- Peter is living with a chronic illness that has been more challenging lately.
- Although he is out and about for appointments, he often feels alone. He has two children that live interstate, which is making it difficult for them to connect.
- Peter wants to enjoy more of the things he did before his illness started getting in the way and to feel less defined by his medical issues.
- Peter is having trouble sleeping at night, which is impacting his mood and energy level.

Benefits for Peter

- ✓ He feels happy and supported in his home
- ✓ He feels more connected with family and friends
- ✓ He has more energy for his family when they visit
- ✓ He feels confident in his network of people that he can call on for support

Peter and HomeMade

- Found a support worker with a keen interest and mind for trivia who is available each week to assist with driving to the game, getting around at the venue, and coming up with some good answers to the questions about pop culture!
- Found a support worker to clean and keep his home organised every fortnight.
- Can go with Alfie and a dog walker to the park and enjoy watching Alfie run around with the other dogs.
- Purchased an iPad through his package and attended lessons to learn how to use the device, access different video call platforms and other useful apps.
- Purchased a humidifier to help regulate his sleep environment.





HomeMade

Home care made by you

Need more information?

Get in touch.

Call 1300 655 688

Email hello@homemadesupport.com.au

Visit [homemadesupport.com.au](https://www.homemadesupport.com.au)

©2022 Self Managed Support Pty Ltd ABN 88 638 372 960. Self Managed Support trading as HomeMade is an Approved Provider that delivers package management services to customers receiving home care packages. HomeMade offers a low cost shared management solution for customers who wish to self-manage.

This document provides several illustrative and comparative examples to demonstrate how the HomeMade package and shared management services work.

The figures and comparisons contained in this document are necessarily general. They do not consider all relevant factors, including things like total hours of work available or training and experience. Arrangements between the service provider, workers and people who require their services (including hourly rate and hours of work) facilitated by the customer will be the subject of the agreement between the relevant individuals. The general comparisons in this document do not reflect any such arrangements.

Use of HomeMade services should be considered in accordance with our Agreement and Privacy Policy. Please contact us directly to find out what your package management options might look like.